



# 7 Of Our “Hottest” New Home Plans

Paramount Construction, Inc. has copyrighted these plans and does not allow use or reproduction of these plans with out the express written permission of Paramount Construction, Inc.

Rob Maggin



If you're in the market to build a new home on your lot or one of ours in Bethesda, McLean, Chevy Chase, Potomac, N.Arlington, Falls Church, Rockville or N.W. D.C., then this could be the most important message you've ever read.

Hi, my name is Rob Maggin and I love helping people design and build new homes and consult with their real estate needs.

But I was fed up hearing stories from frustrated home buyers who came to me after wasting months or even years searching for the perfect new home plan with nothing to show for all their time and effort, except a lot of frustration.

I'd hear complaints like; 'all the new homes look so "cookie-cutter", or 'ever builder new home is just a "boxy looking McMansion"'.

Or, I'd hear nightmare stories about the outrageous fees some home designers were charging home buyers for a custom home plan. Fees of 15% to 20% or more of the building budget, just for a set of plans, is not uncommon around here!



So, along with my amazing staff architect, Kevin, we created hundreds of new home plans (and growing, we add four or five new plans every month) designed to blend seamlessly into our close-in Washington D.C. neighborhoods.

And our plans are not limited to just Arts and Crafts style homes you see popping up all over.

Here are just some of the new home styles we're creating: Mediterranean, Transitional, French Country, Contemporary, Four-Square, Colonial, Modern, Ramblers, Mobile Home (*just kidding*, just want to make sure you're paying attention :), Modern Rustic, Saltbox, Tudor, and Bungalow.

We also have plans with walk-out lower levels, third floor lofts, side-load garages, and first floor guest-suites. Plus, plans ideal for sloping lots, narrow lots, and wide lots.

So, I hope this small sample of new home plans we're building in the DC area now will give you some creative ideas of what your next dream home could look like.



Paramount Construction©

# Woodmont

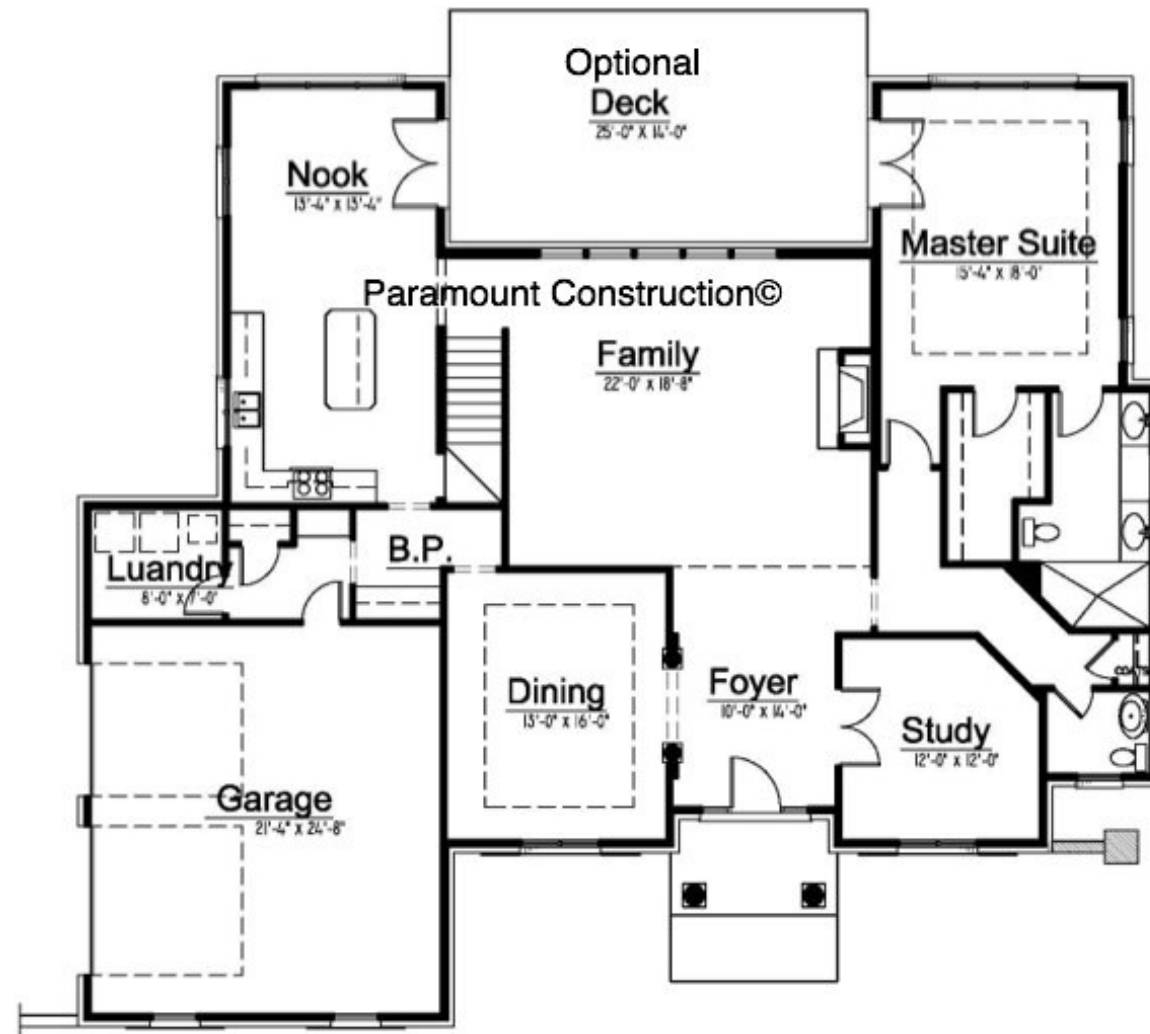


This stone and concrete siding Transitional style home offers a blend of traditional design while enjoying many modern features on the interior. A wide center hall greets you as you step inside with a flanking dining room and study.

From the foyer your eye is focuses through the open view of the spacious family room. The family room and kitchen are washed in daylight from the many windows viewing the rear yard. Upstairs this plan offers four bedrooms and is easily expanded to five. This plan features a first-floor master suite.

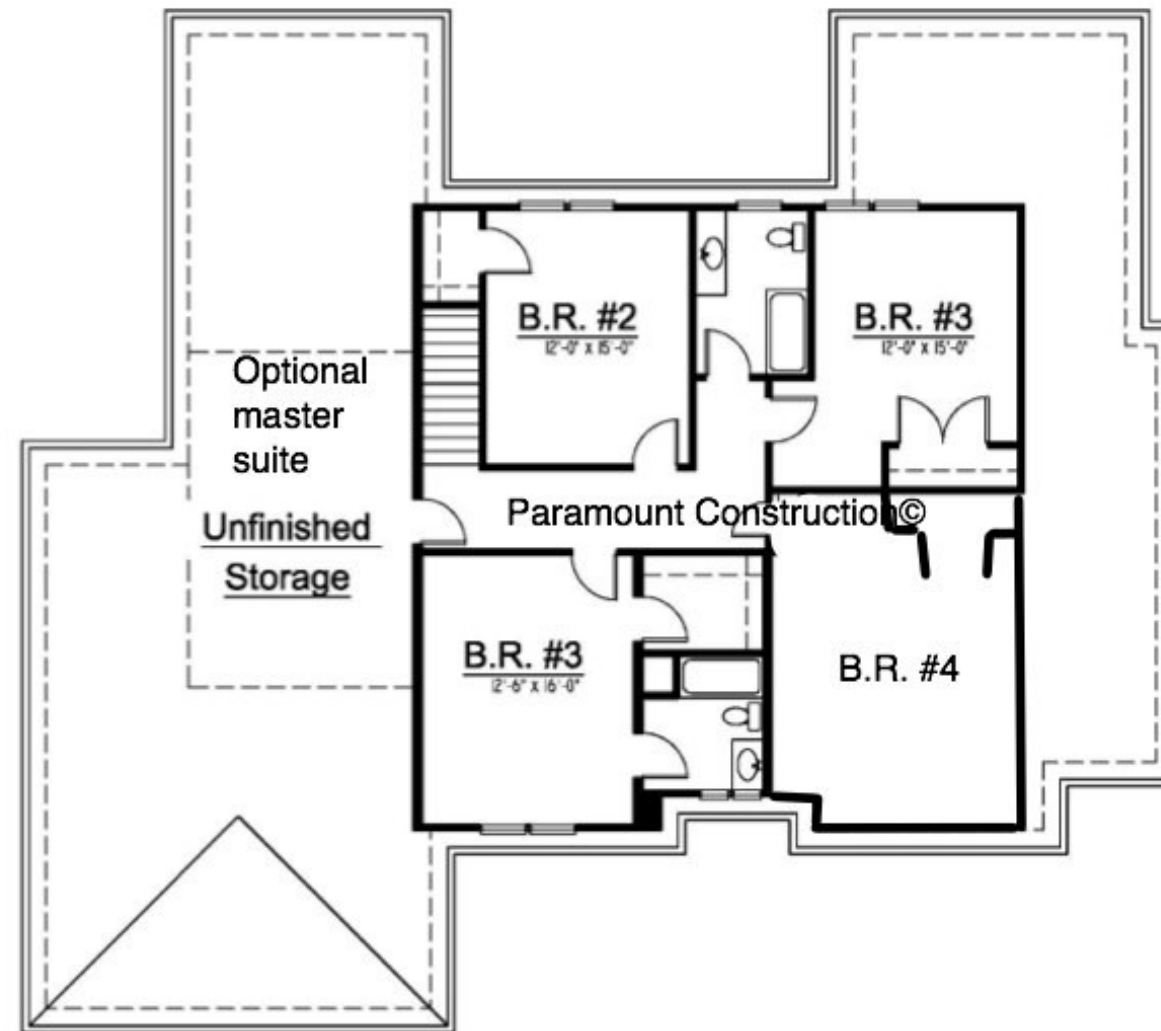


**Plan # #6189**  
**Lower Level 1,558 S.F.**  
**Main Level 1,858 S.F.**  
**Upper Level 1,558 S.F.**  
**Total Finished 4,974 S.F.**



Woodmont

Main Level



All plans have basements, if not shown.  
All plans can be completely customized.  
All plans can be made larger or smaller.  
Most plans have the following options: walk-up lower levels,  
optional 3rd Levels, & 1st floor guest suites, screen porches. Side  
load garage is a function of the lot. Please do not scale plans.

Woodmont

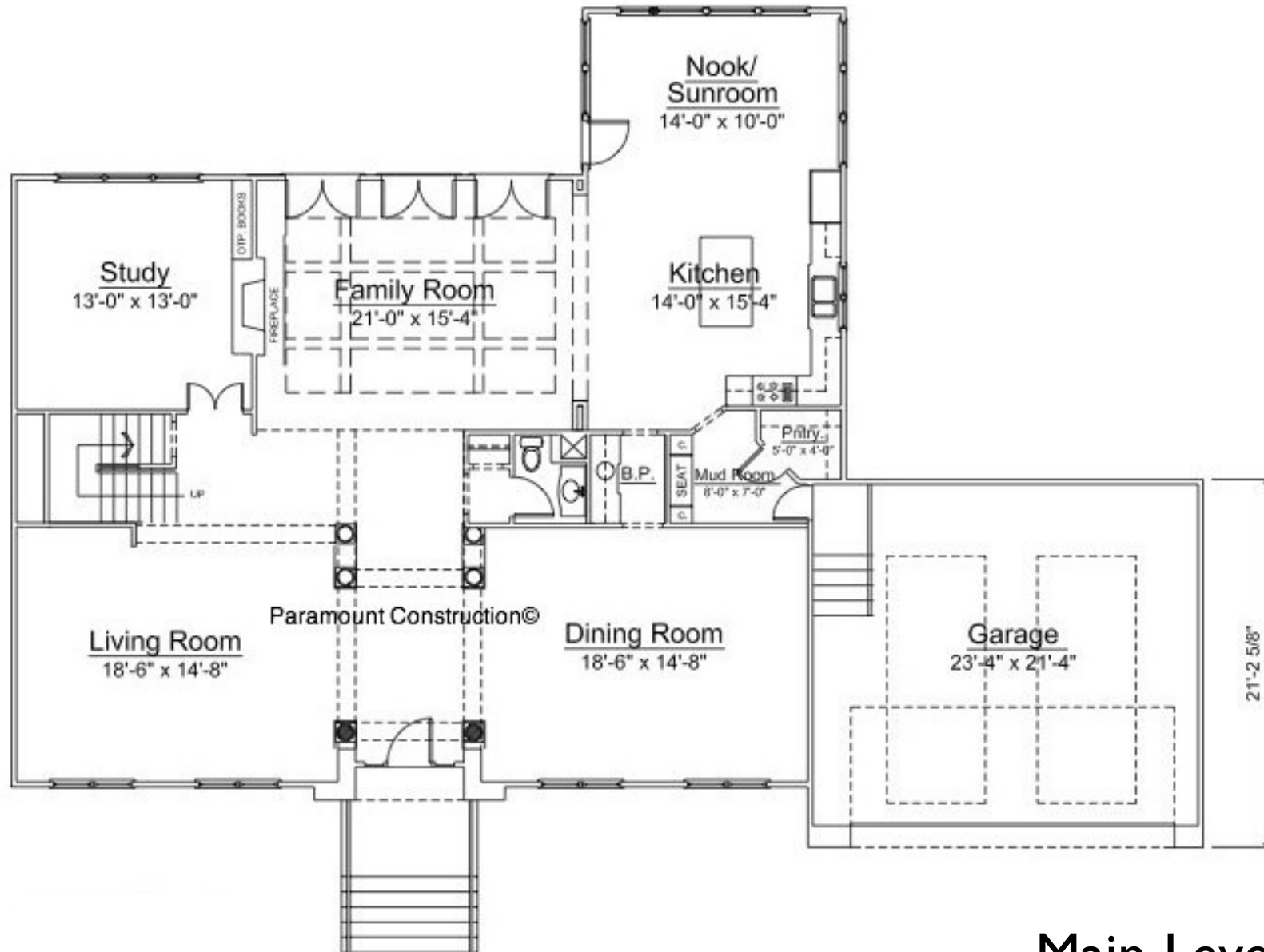
Upper Level



Sun drenched best describes this peaceful Mediterranean home. From the clearstories in the entry foyer to the wall-to-wall glass in the great room, this home will inspire you in many ways. From the foyer there are scenic views to the dining room courtyard. From the great room there are great views to the rear patio and rear yard. Upstairs you'll find four bedrooms with three bathrooms, each located off a gracious upper hall foyer.



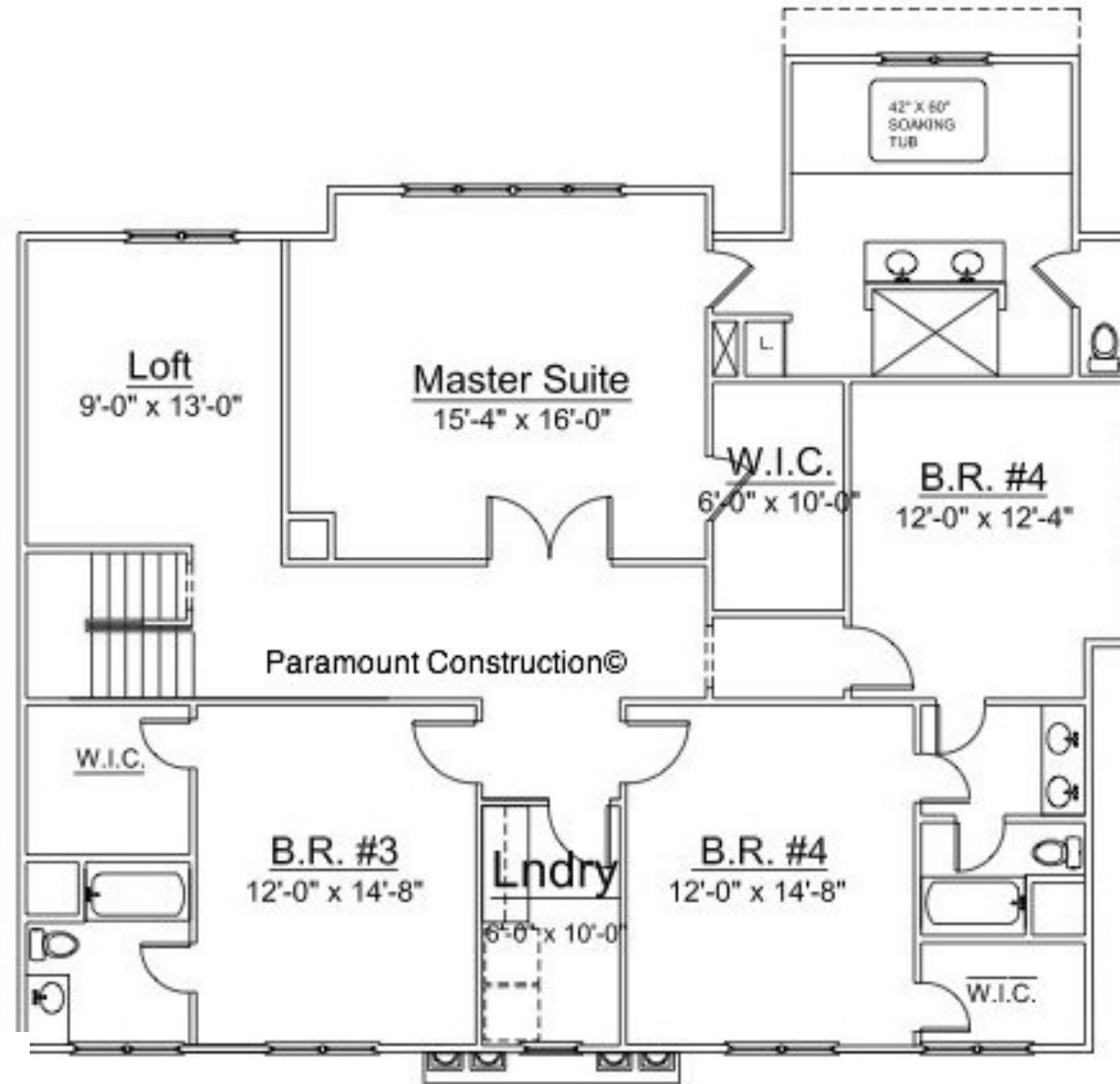
**Plan # #6189**  
**Lower Level 1,558 S.F.**  
**Main Level 1,558 S.F.**  
**Upper Level 1,558 S.F.**  
**Total Finished 4,674 S.F.**



Nevis

Main Level





All plans have basements, if not shown.  
All plans can be completely customized.  
All plans can be made larger or smaller.  
Most plans have the following options: walk-up lower levels,  
optional 3rd Levels, & 1st floor guest suites, screen porches. Side  
load garage is a function of the lot. Please do not scale plans.

Nevis

Upper Level



This sophisticated home blends clean contemporary lines with warm craftsman details. From a comfortable covered porch, to a two-story foyer there is just the right balance between grand and cozy. Once in the front door the interior space soars in many directions.

One additional bedroom is in the lower level along with a spacious recreation room. The optional loft at the second-floor stair landing makes a great study area or quiet space to get away and relax. This is a great plan for a narrow lot.



Paramount Construction©

# Marcey

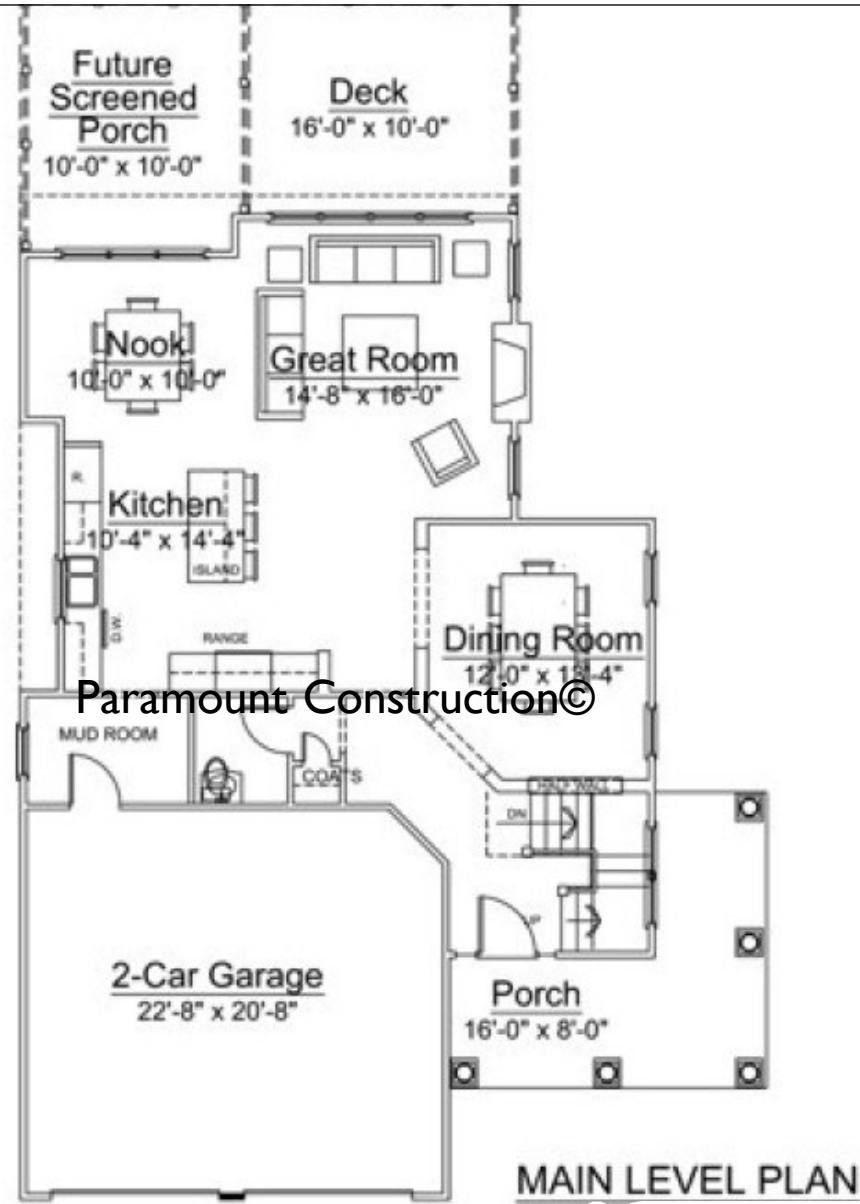
**Plan # #6189**

**Lower Level 1,010 S.F.**

**Main Level 1,010 S.F.**

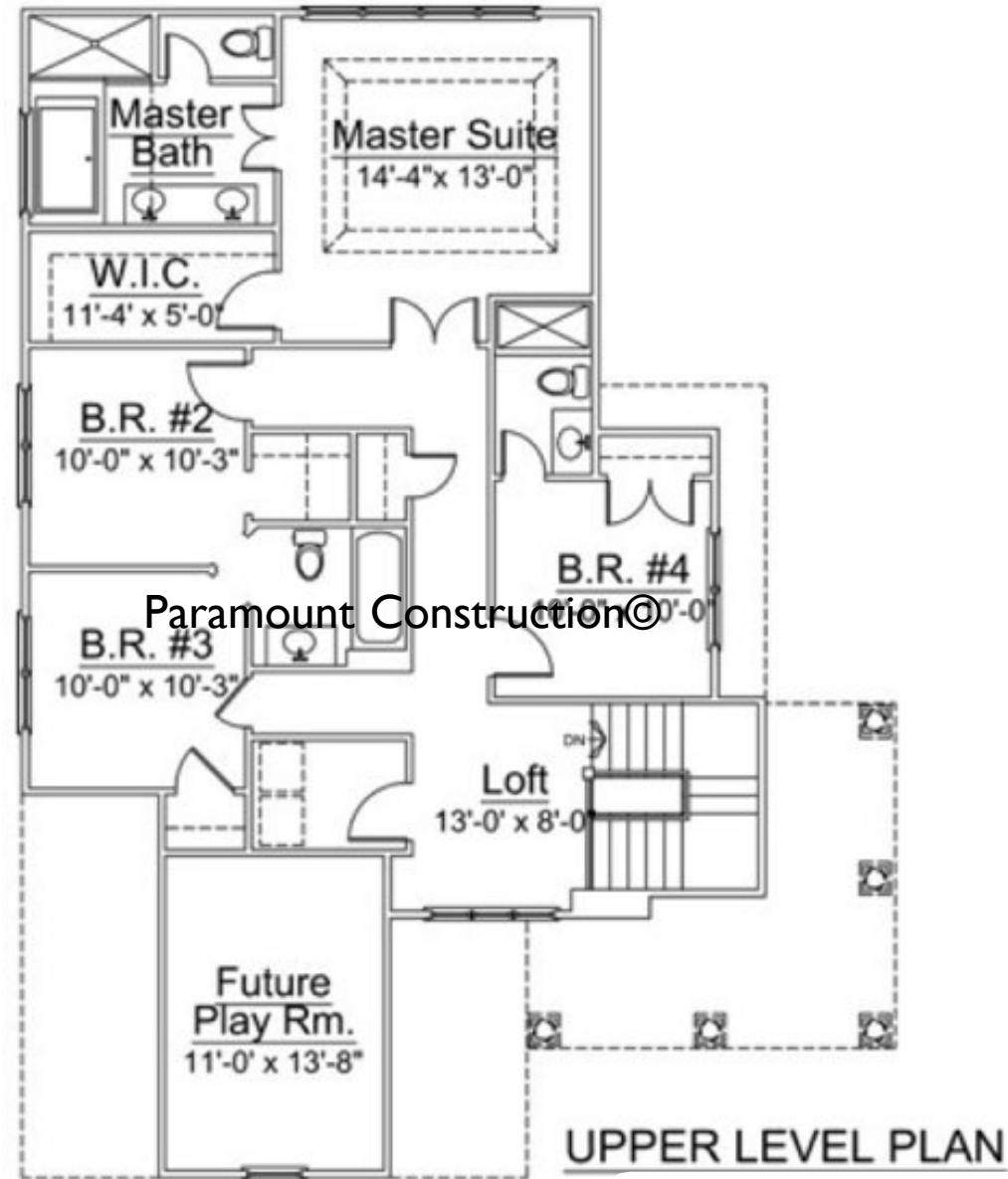
**Upper Level 1,190 S.F.**

**Total Finished 3,210 S.F.**

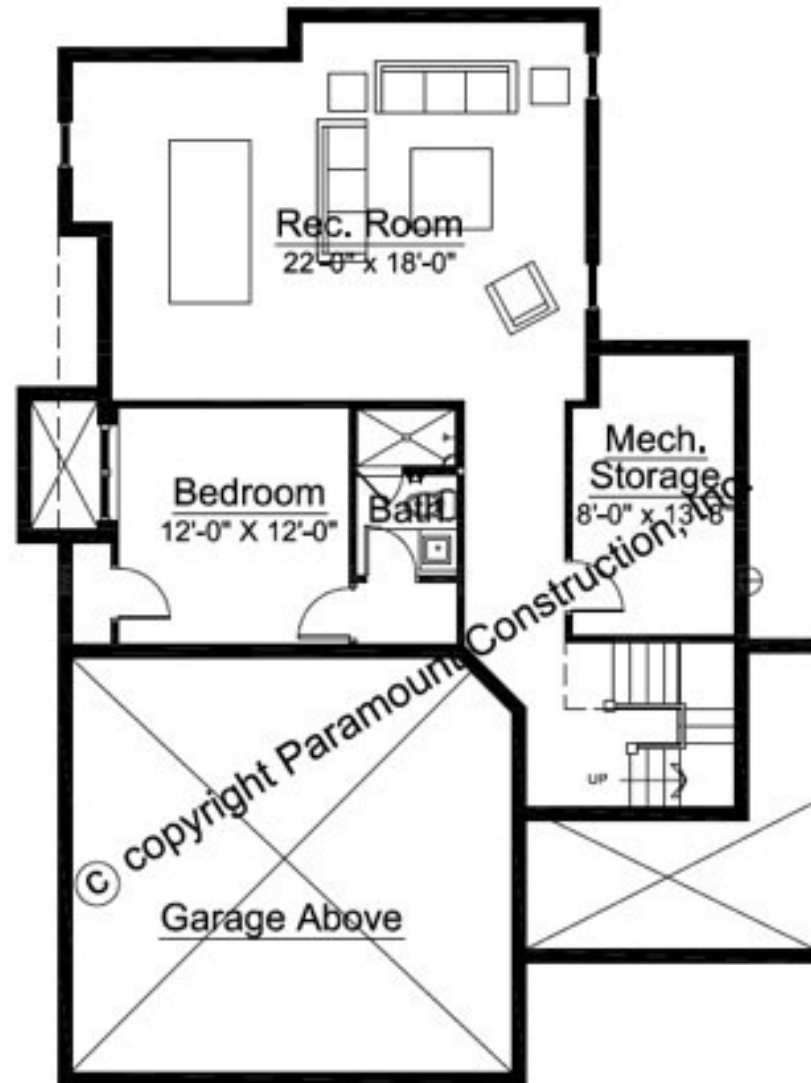


Paramount Construction©

# The Marcey



**The Marcey**



# Marcy

---

## Lower Level

All plans have basements, if not shown.  
All plans can be completely customized.  
All plans can be made larger or smaller.  
Most plans have the following options: walk-up lower levels,  
optional 3rd Levels, & 1st floor guest suites, screen porches. Side  
load garage is a function of the lot. Please do not scale plans.



aramount Construction©

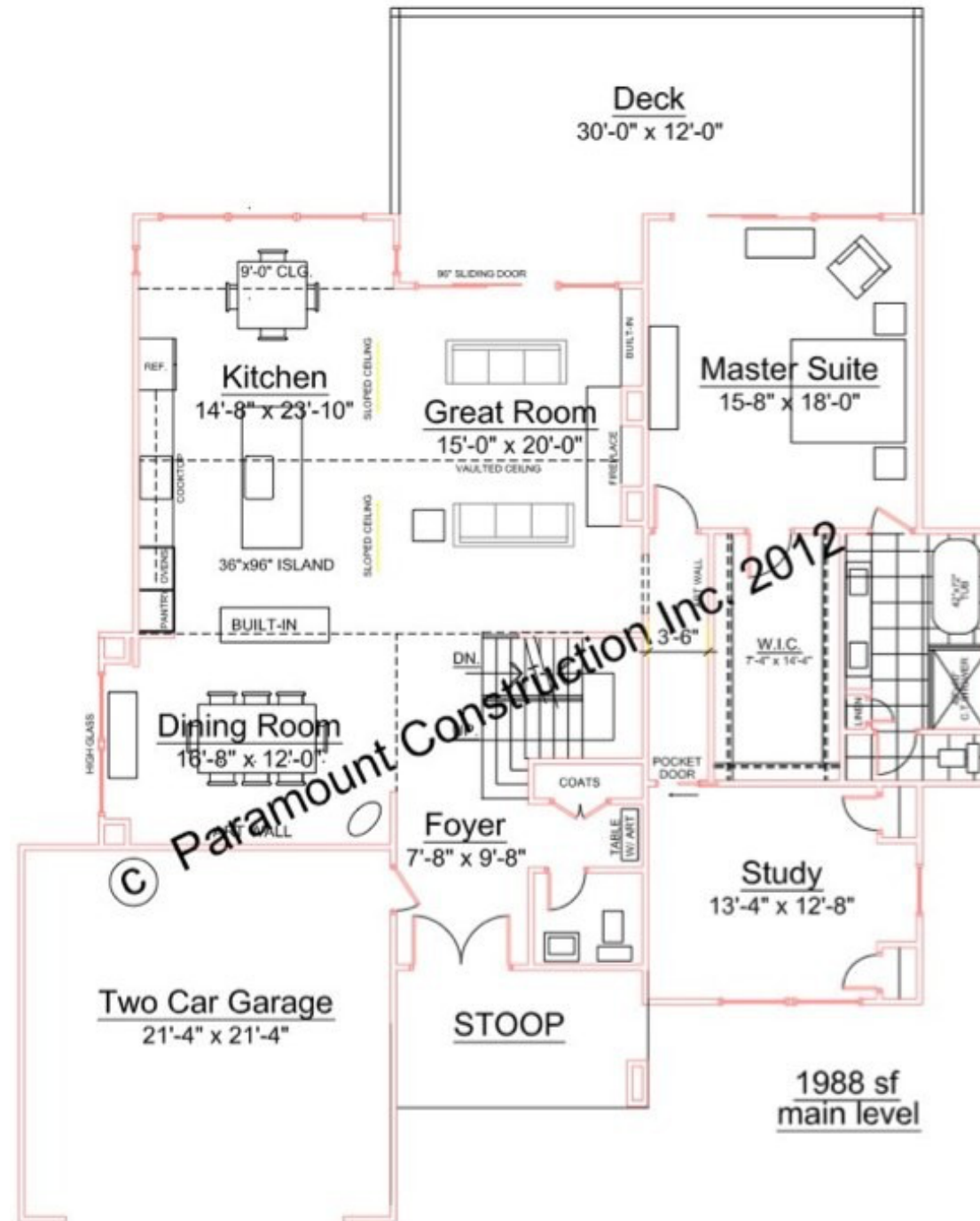
# Halbert



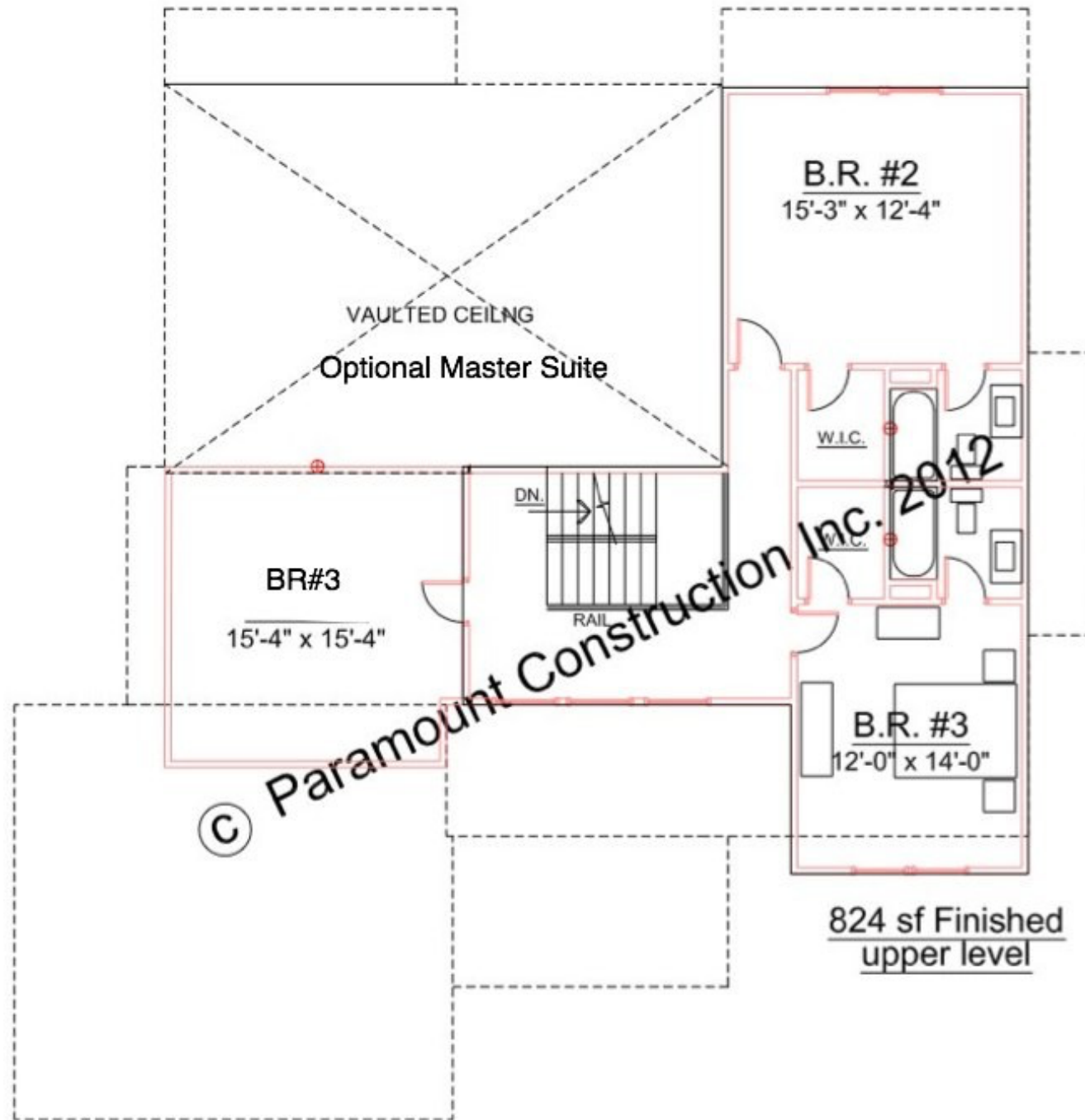
This contemporary style home features geometric angles and lines. Once in the front door the interior space soars in many directions. The foyer, dining room and great room are all topped with vaulted ceilings. The gourmet kitchen is complimented with a nearby sunroom. The master suite is on the main level along with an additional suite, perfect for guests or office. Three additional bedrooms are on the walk-out lower level along with a spacious recreation room. The loft overlooking the great room makes a great office or second family room.



<b>Plan # #6189</b>	
<b>Lower Level</b>	<b>1,840 S.F.</b>
<b>Main Level</b>	<b>1,988 S.F.</b>
<b>Upper Level</b>	<b>824 S.F.</b>
<b>Total Finished</b>	<b>3,210 S.F.</b>



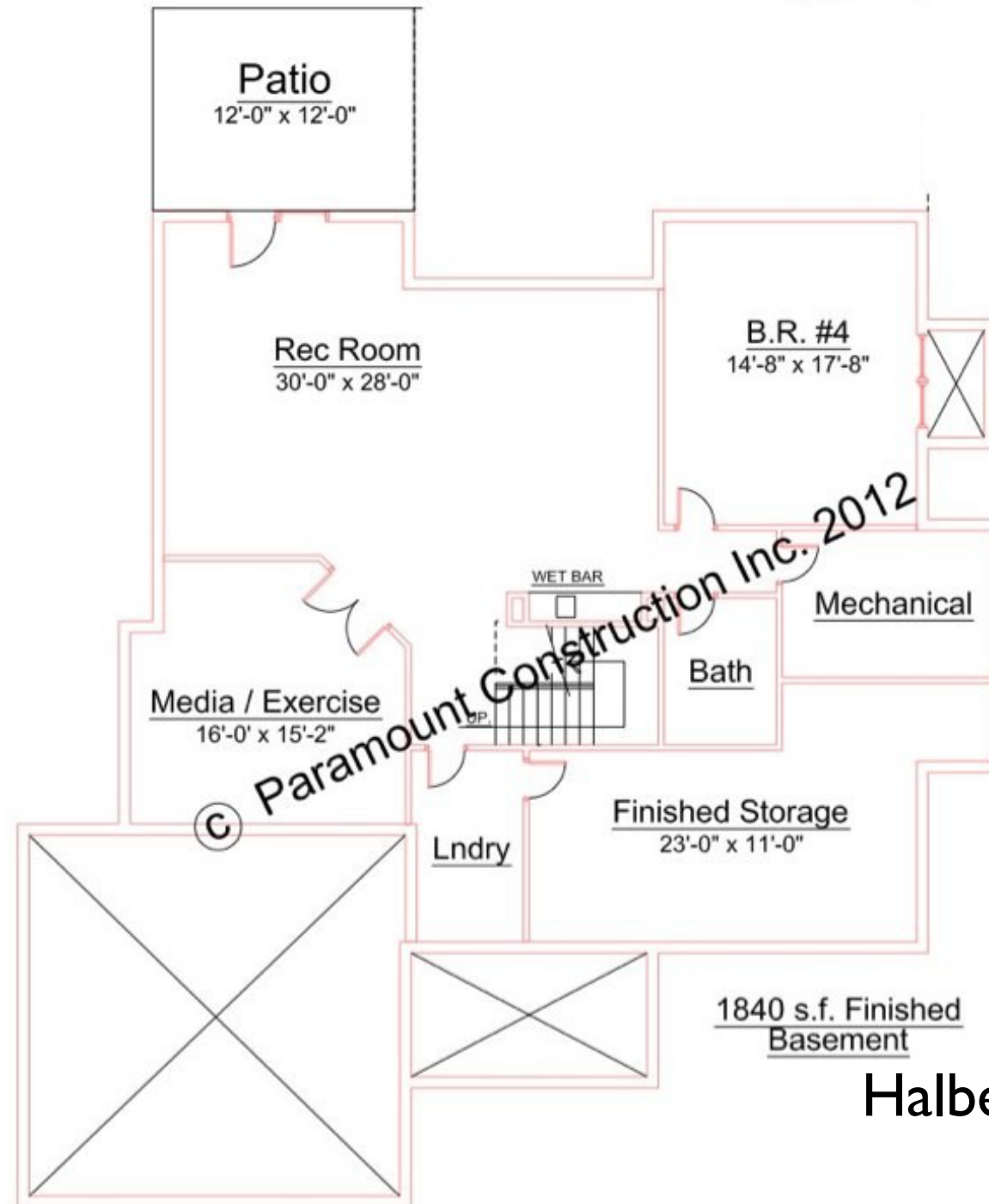
Halbert



824 sf Finished  
upper level

Halbert





All plans have basements, if not shown.  
All plans can be completely customized.  
All plans can be made larger or smaller.  
Most plans have the following options: walk-up lower levels,  
optional 3rd Levels, & 1st floor guest suites, screen porches. Side  
load garage is a function of the lot. Please do not scale plans.

Halbert



This craftsman home combines the many shingle style elements into a classic beauty. The covered porch grounds a triple window above and the multiple roof lines adding quiet interest to the façade. The main level has all the formal spaces along with a generous family room suite complete with gourmet kitchen. The highlight upstairs is a master retreat that shares an optional fireplace. Each bedroom includes an oversized walk-in closet. The lower level includes a 5<sup>th</sup> bedroom with full bath and a recreation room with an optional fireplace.



**Plan # #6189**

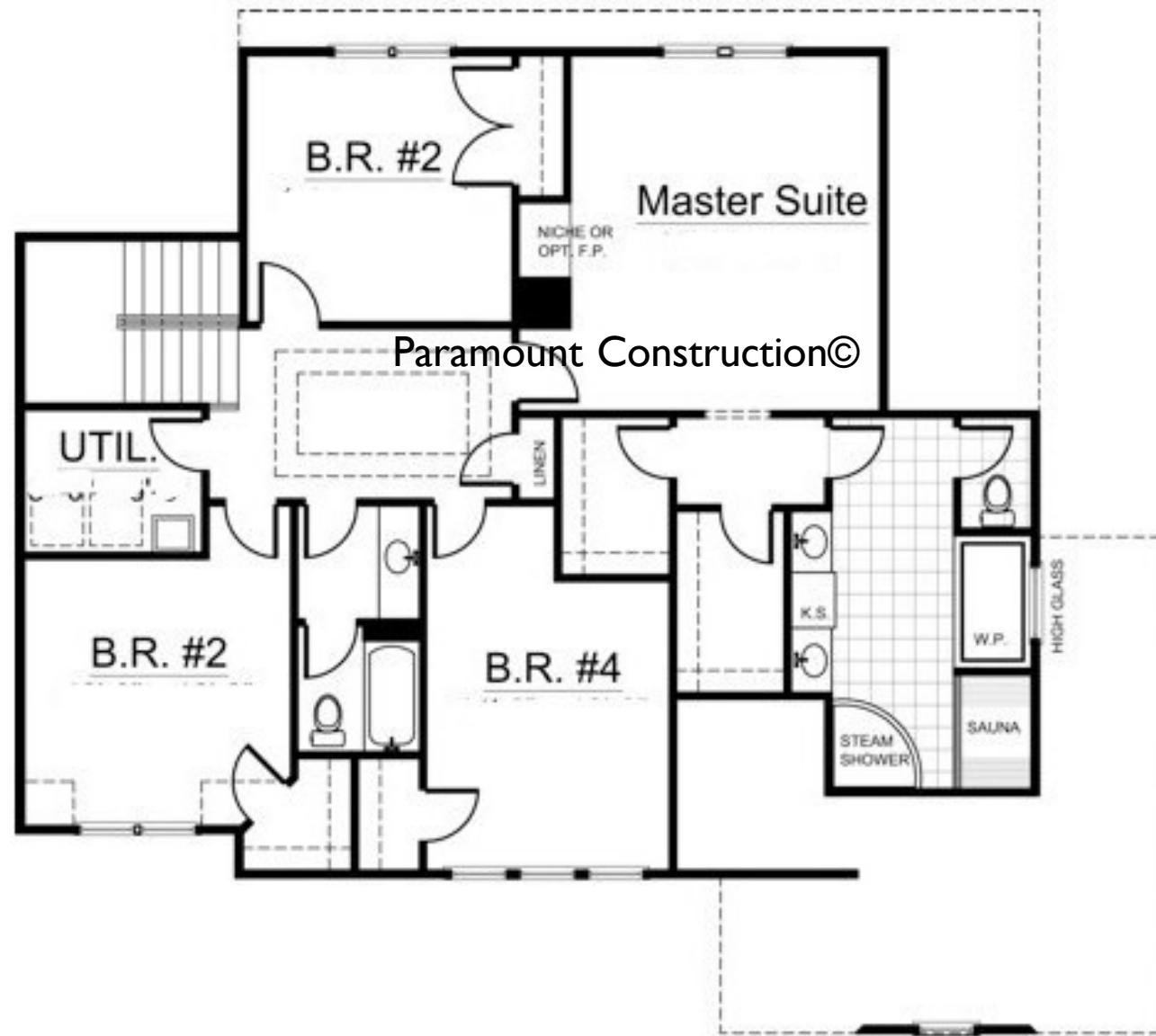
**Lower Level 1,200 S.F.**  
**Main Level 1,350 S.F.**  
**Upper Level 1,350 S.F.**  
**Total Finished 3,900 S.F.**

Paramount Construction©

# Battery Park



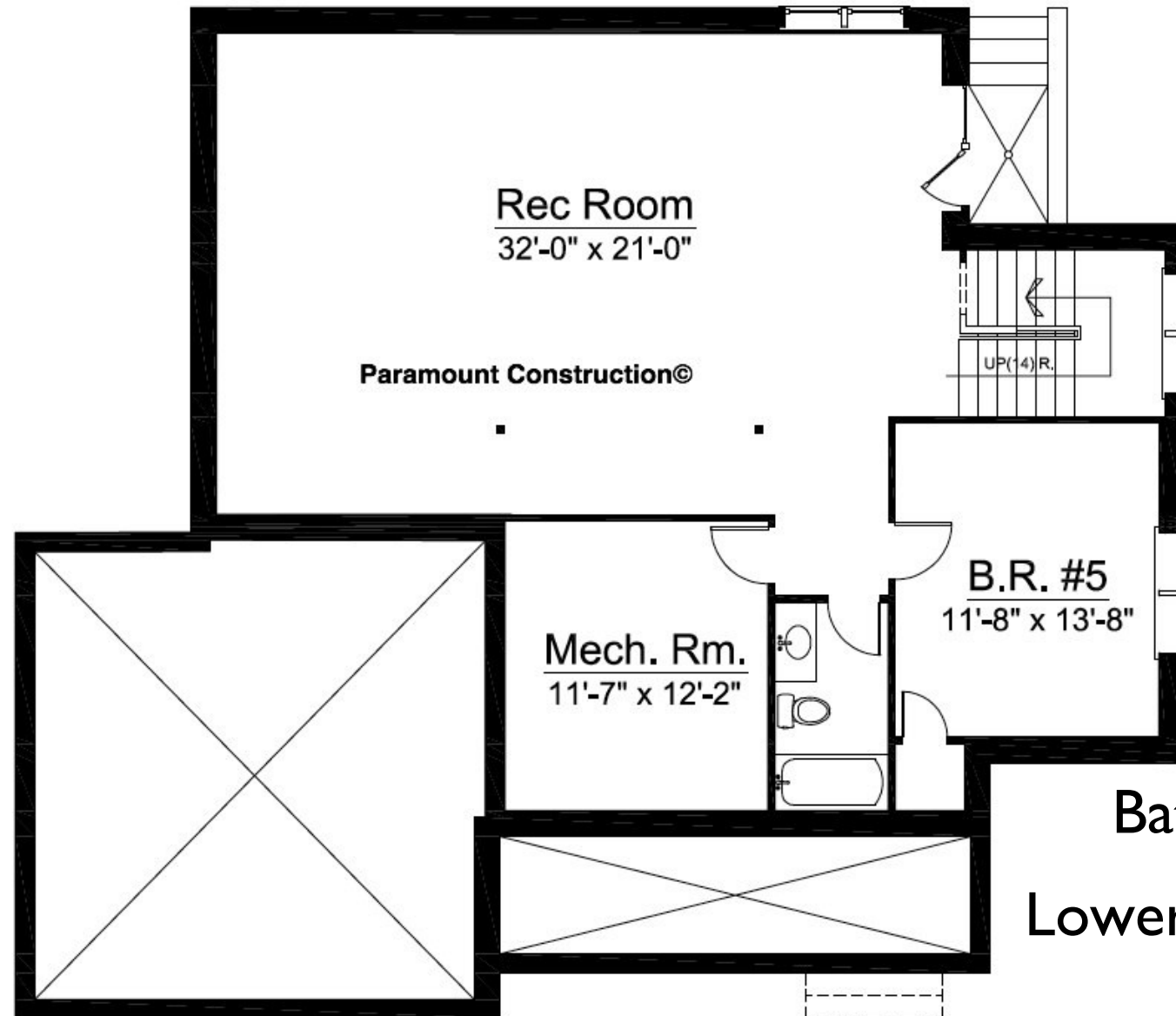
**The Battery Park      Main Level**



All plans have basements, if not shown.  
All plans can be completely customized.  
All plans can be made larger or smaller.  
Most plans have the following options: walk-up lower levels,  
optional 3rd Levels, & 1st floor guest suites, screen porches. Side  
load garage is a function of the lot. Please do not scale plans.

## The Battery Park

## Upper Level



Battery Park  
Lower Level



Paramount Construction©

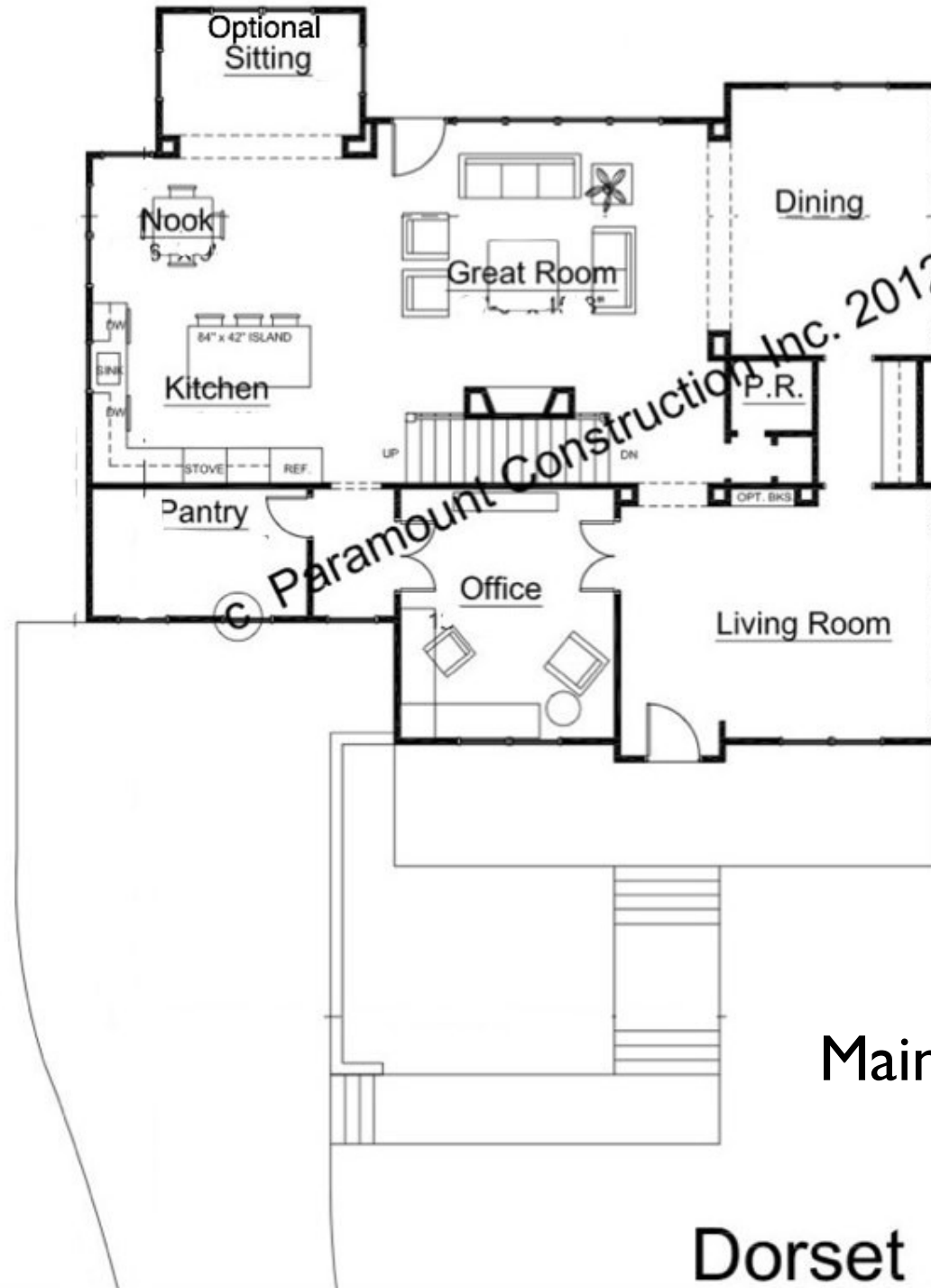
# Dorset

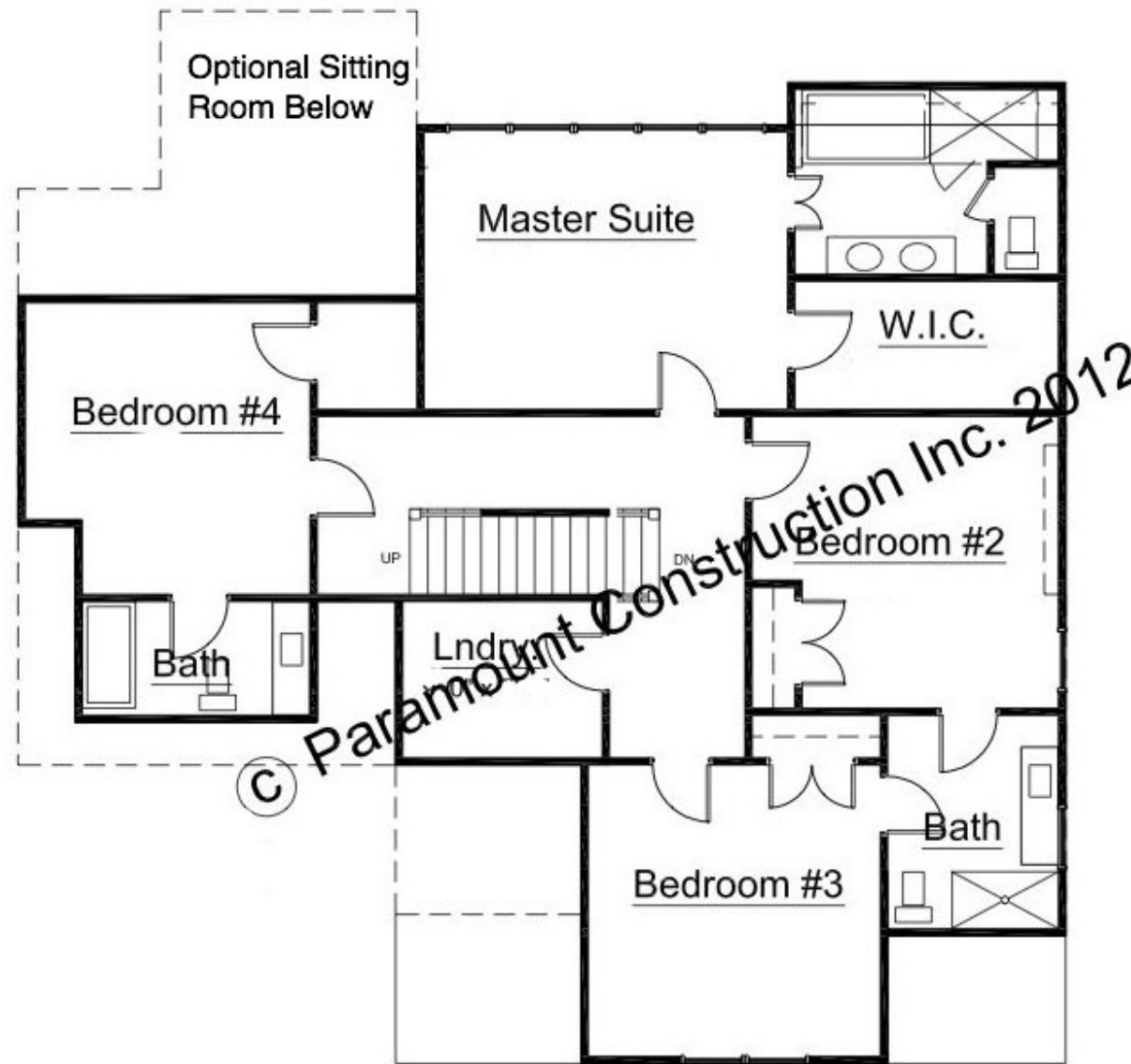


This home is perfect for a uphill lot or for those who just want to tuck the garage under the house. The front balcony off the family study is a highlight of the front façade. The stone adds warmth and texture to this classic cottage. With the garage under the house, light pours in from just about every direction. The spacious gourmet kitchen includes a center island, plentiful pantry space and a convenient mudroom. Upstairs you'll find a buddy bath for the kids and private bath for the guests along with a spacious master suite. This is nice plan for a sloping lot.



**Plan # #6189**  
**Lower Level 1,500 S.F.**  
**Main Level 1,650 S.F.**  
**Upper Level 1,650 S.F.**  
**Total Finished 4,800 S.F.**

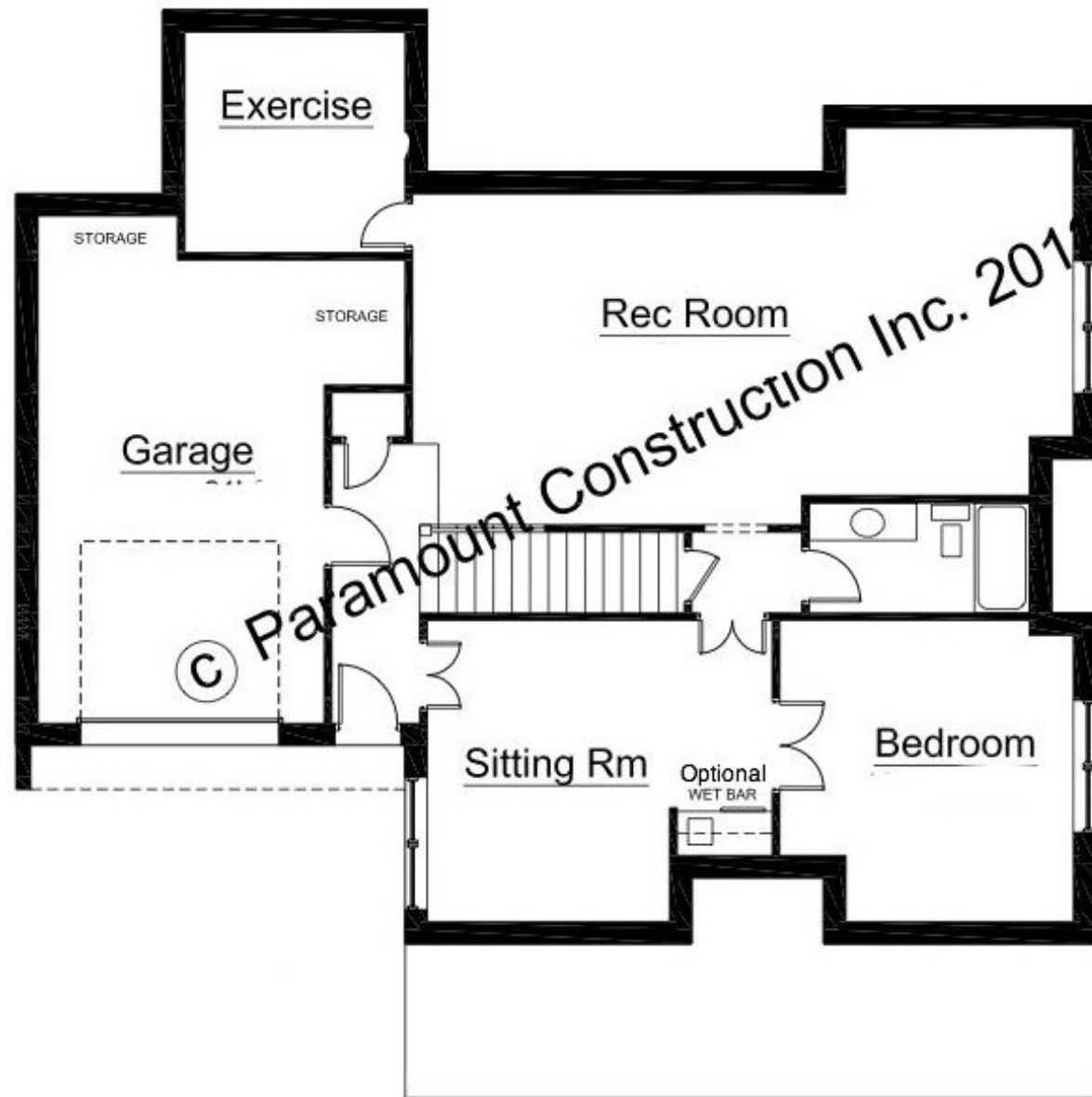




Upper Level

Dorset





All plans have basements, if not shown.  
All plans can be completely customized.  
All plans can be made larger or smaller.  
Most plans have the following options: walk-up lower levels,  
optional 3rd Levels, & 1st floor guest suites, screen porches. Side  
load garage is a function of the lot. Please do not scale plans.

# Dorset

## Lower Level



Paramount Construction©

# Lenox



Don't let the charming façade of this transitional style home fool you. This home boasts all the formal rooms plus a very spacious kitchen--family room suite. The foyer stair is a classic and a beautiful focal point. Optional back stair conveniently located right off the kitchen. The stone fireplace at the family room adds a cozy feature inside and a striking compliment to the stone elevation. A private master bath, buddy bath, and separate guest bath on the second floor are popular requests.



**Plan # #6189**  
**Lower Level 1,200 S.F.**  
**Main Level 1,250 S.F.**  
**Upper Level 1,290 S.F.**  
**Total Finished 3,740 S.F.**



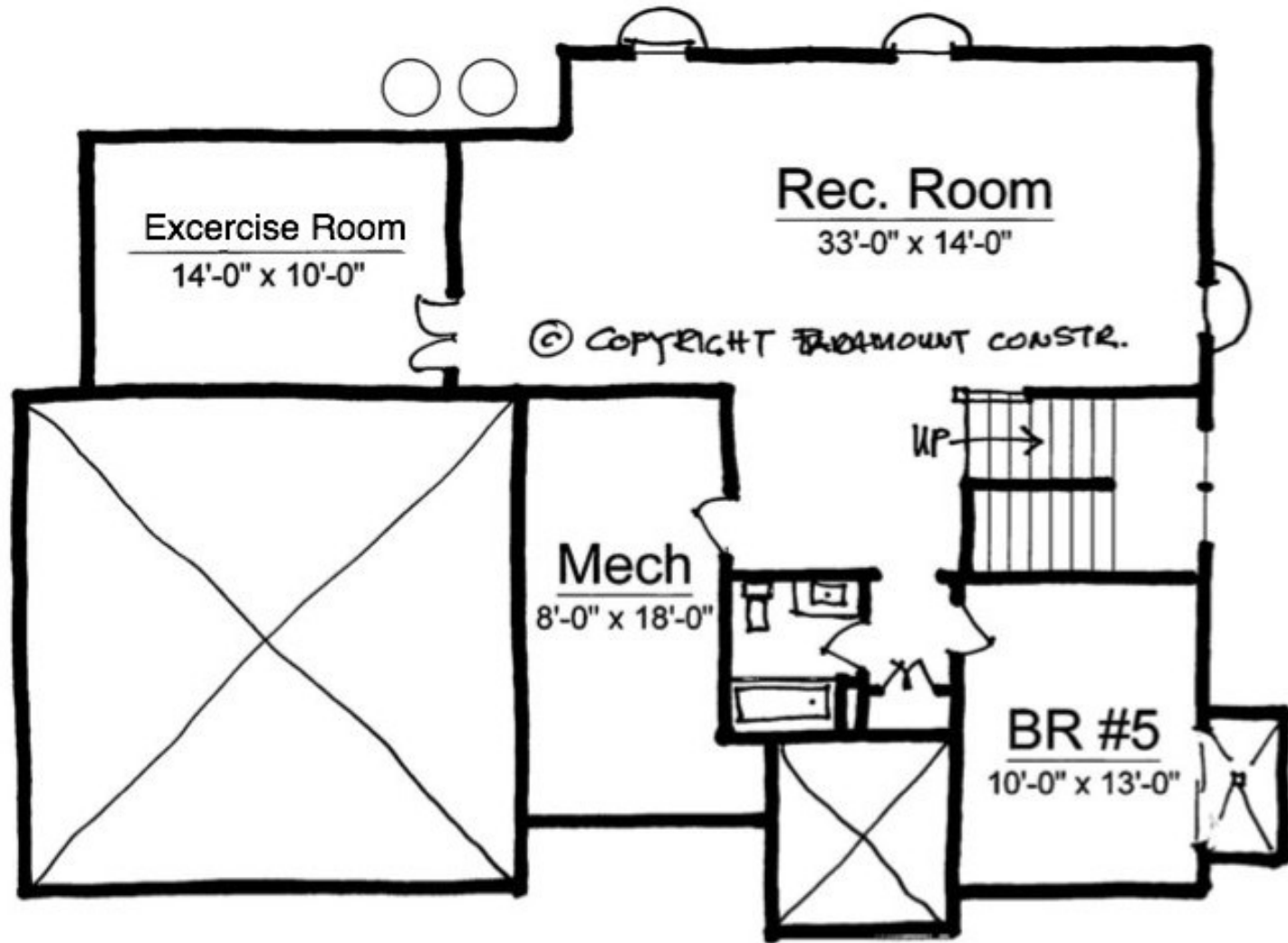
Lenox

Main Level



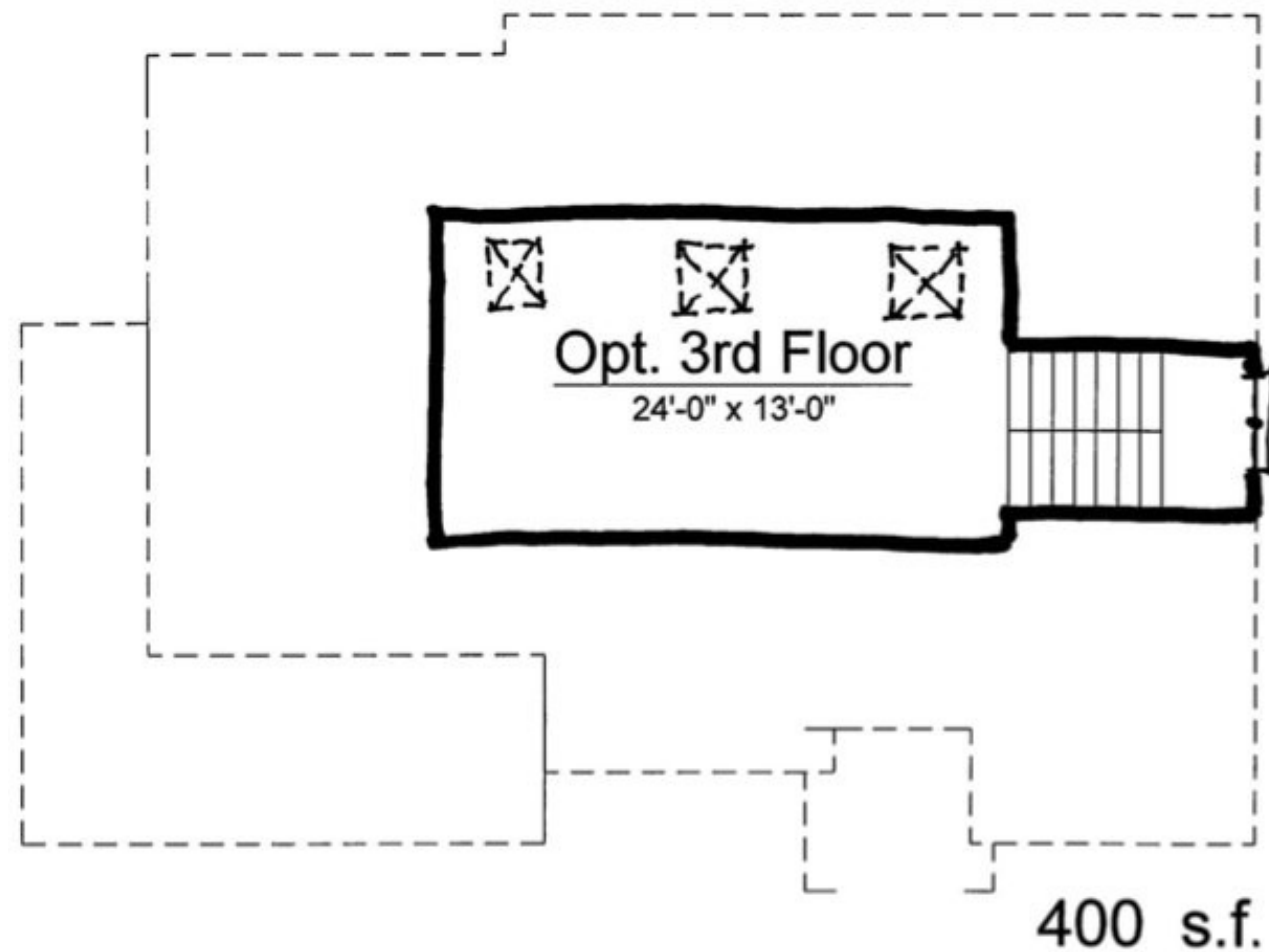
Upper Level

Lenox



Lower Level

Lenox



All plans have basements, if not shown.  
All plans can be completely customized.  
All plans can be made larger or smaller.  
Most plans have the following options: walk-up lower levels,  
optional 3rd Levels, & 1st floor guest suites, screen porches. Side  
load garage is a function of the lot. Please do not scale plans.

Lenox

Optional Loft Level



# Madison



A great home for a narrow lot this 38' wide home is loaded with space inside. The foyer is well lit by the nearby stair that is bathed in light. The living room and formal dining share views across the width of the house. The study, family room and kitchen each enjoy great views to the rear yard.

Upstairs you'll find a master suite with a spacious bath and walk-in closet. Three additional bedrooms top of the second floor with two additional bathrooms. The laundry room is oversized and a bonus space is the loft at the top of the stairs that is accented by three transoms from the front of the house.



**Plan # #6189**

**Lower Level 1,500 S.F.**

**Main Level 1,671 S.F.**

**Upper Level 1,579 S.F.**

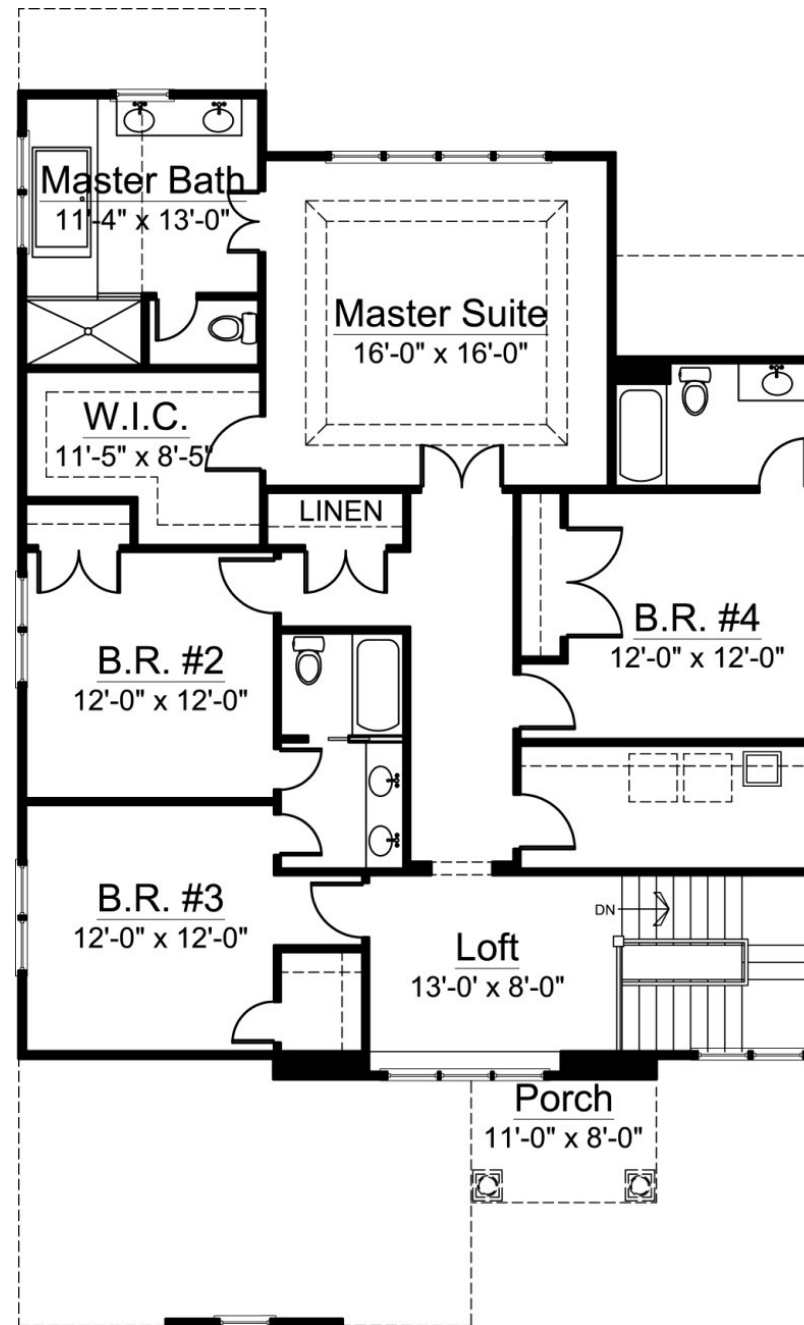
**Total Finished 4,750 S.F.**



Madison

Main Level





Madison

Upper Level

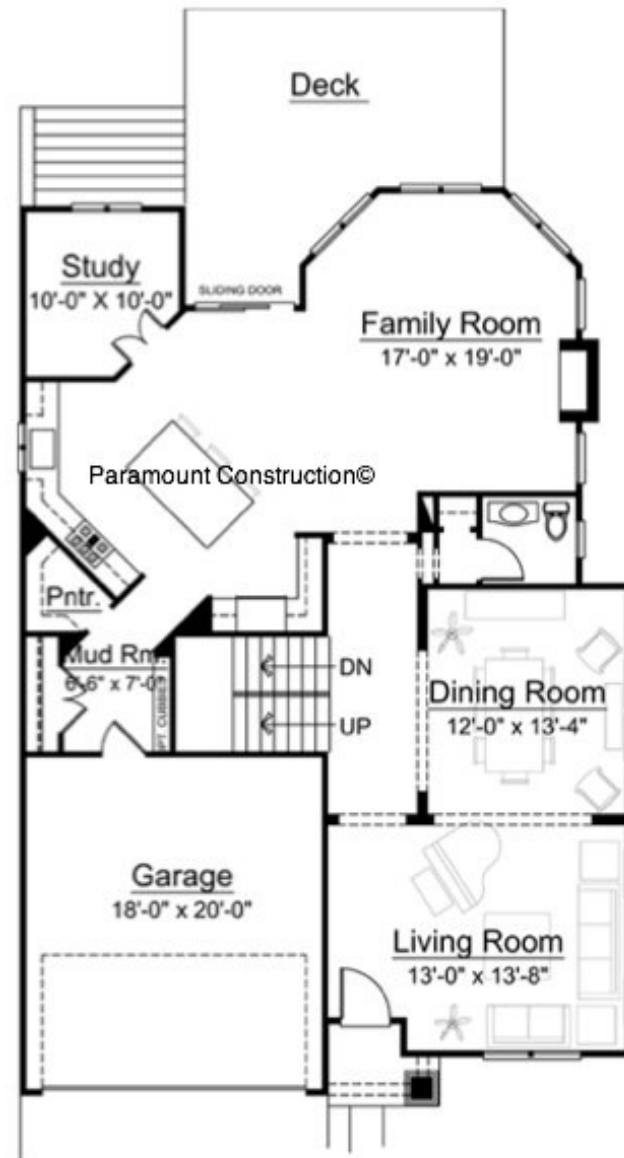
All plans have basements, if not shown.  
All plans can be completely customized.  
All plans can be made larger or smaller.  
Most plans have the following options: walk-up lower levels,  
optional 3rd Levels, & 1st floor guest suites, screen porches. Side  
load garage is a function of the lot. Please do not scale plans.



From the elliptical roof window to the wide front porch this home's façade is magnificent. The front living room with easy dining room access makes for easy entertaining. The kitchen is the heart of the home with an open family room. The nicely sized mudroom includes cubbie space for the whole family. The master suite includes a spacious walk-in closet with a soaring tray ceiling which highlights this retreat. Two bedrooms share a Jack and Jill bath and the fourth bedroom has an en suite bathroom.

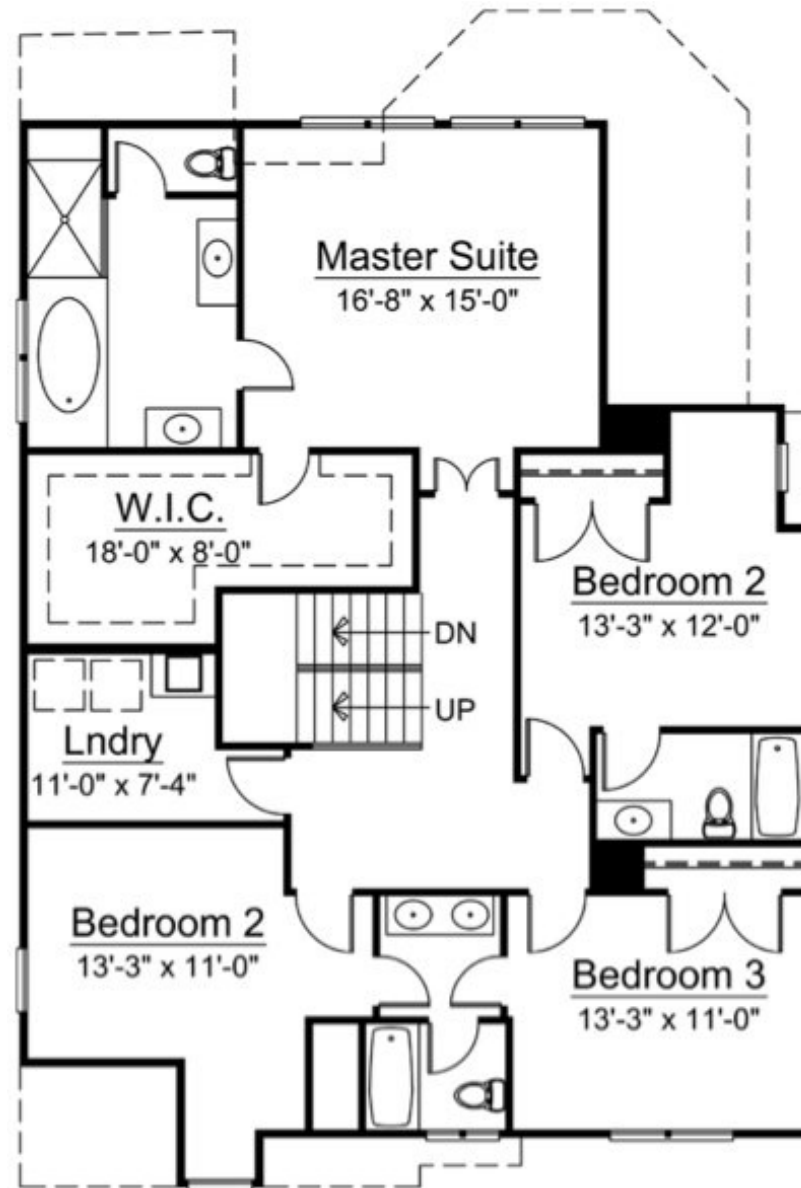


**Plan # #6189**  
**Lower Level 1,400 S.F.**  
**Main Level 1,452 S.F.**  
**Upper Level 1,600 S.F.**  
**Total Finished 4,452 S.F.**



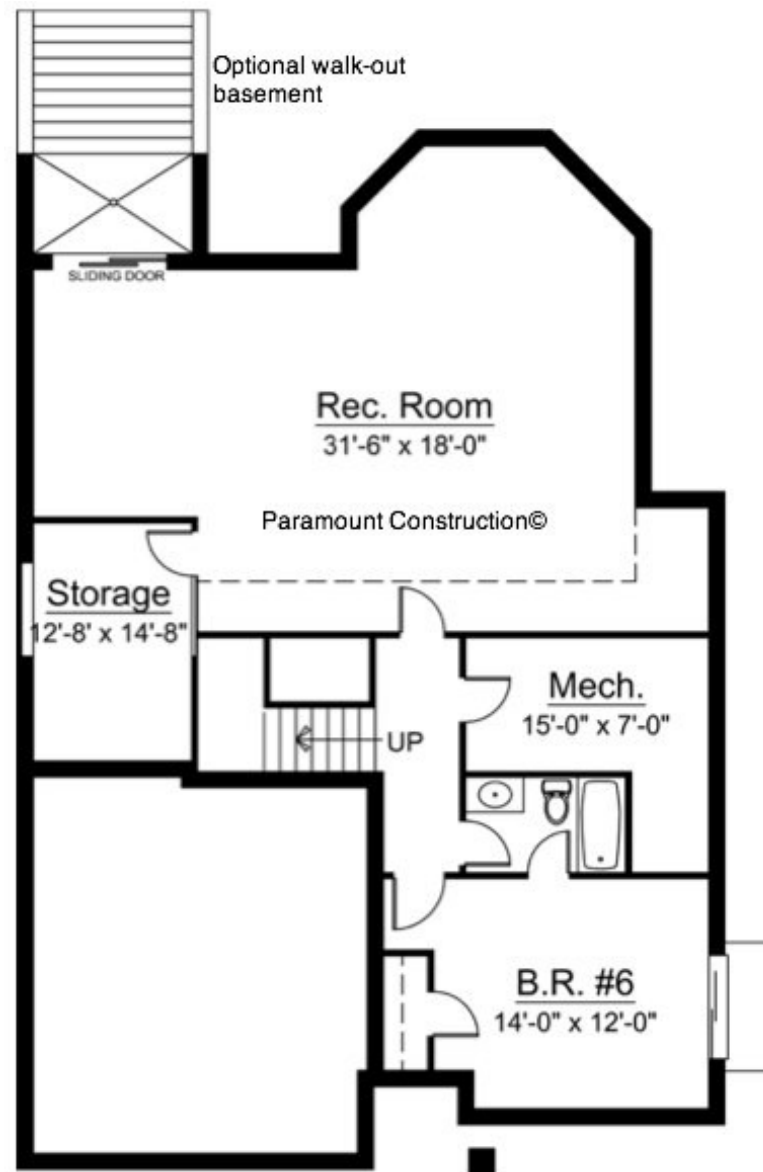
**The Landon**

**Main Level**



**The Landon**

Upper Level



## The Landon

Lower Level

All plans have basements, if not shown.  
All plans can be completely customized.  
All plans can be made larger or smaller.  
Most plans have the following options: walk-up lower levels,  
optional 3rd Levels, & 1st floor guest suites, screen porches. Side  
load garage is a function of the lot. Please do not scale plans.



If you liked this small sample and would like to see our portfolio of over 155 new home plans designed specifically to blend into our Washington D.C. close-in neighborhoods, please [click here to learn more](#).

And if you'd like to find out how you can save on real estate commissions and see our complete building lot inventory before the lots go into the MRIS/MLS email or call me. My email is [rob@ParamountConstruction.net](mailto:rob@ParamountConstruction.net) and my number is 301-370-6463.

We have prime building lots in Bethesda, McLean, Chevy Chase, Potomac, N. Arlington, Falls Church, Rockville and N.W. D.C.



If you like these home plans and want access to over 150 more really “cool” new home plans designed to blend seamlessly into our close-in Washington DC neighborhoods call 301-370-6463 or click button below:

[Click Here To See  
Over 155 More  
"Cool" Home Plans](#)

Paramount Construction, Inc. has copyrighted these plans and does not allow use or reproduction of these plans with out the express written permission of Paramount Construction, Inc.